

maxmatic
by METACONCEPT

WAXMAX 5000 injector

Technology condensed



WAXMAX 5000 INJECTOR

WAXMAX CONNECT, NETWORKING, OPTIMISATION AND PRODUCTIVITY

In addition to the injector, an external WaxMax Connect module is available. It is designed to support communication between several injectors: the same information is shared in a single database. The injection data of all connected machines is saved for subsequent statistical analysis.

- + **All machines in a workshop have access to the same saved settings:** knowledge of the output per machine and per mould, analysis of rejects to optimise the use of moulds.

ENERGY AND ECONOMY

Designed with a programmer, the WaxMax Connect module enables programming the start-up and stand-by functions of the machines.

- + **Low energy consumption:** machines ready to run upon arrival of operators.



OPTIMISED VACUUM PUMP FOR INJECTOR

A specific vacuum pump, totally independent from the customer's network, helps to optimise the vacuum of the mould ready for injection.

- + **The injection is perfect and precise, wax is evenly distributed in the mould whatever the shape of the pieces.**

COMPACT, FOR BETTER WORKING COMFORT

The WaxMax 5000 injector is **the most compact professional device on the market:** the injector unit, excluding the press, occupies only 31 x 31 cm of the workspace!

- + **Suitable for small spaces:** space-efficient, saving up room for the necessary moulds and tools.

TOUCH INTERFACE, ADJUSTABLE SCREEN: TIME SAVING!

A software interface designed in collaboration with users offers quick and easy access to the menus. Pictograms simplify understanding of functions, while photos of the pieces can be added.

- + **Shorter adaptation time, ultra-fast production mode, easy updates, accelerated search for settings by piece (auto-completion).**

DESIGNED AND MADE IN FRANCE: ROBUST AND UPGRADABLE

The injector's metal structure and the modular design offer rock-solid reliability. The wired connections between the various components enable secure and optimised data transmission.

- + **Machine with great run-time, easy and quick to maintain, spare parts available from local dealer, upgradable device.**



TANK: LARGE CAPACITY AND OUTPUT

A 9 litre tank can hold a large quantity of wax, injected directly into the mould without an intermediate chamber limiting the injection volume.

- + **The machine caters to moulds of all sizes, even the largest ones:** the tank is filled up at fewer intervals to optimise output.

DEBUBBLING AND PERFECTION

A debubbling system enables the wax to be degassed under pressure in order to prevent the appearance of air microbubbles during injections.

- + **Constant injection quality over time:** perfect surface finish of the pieces.



EASY AND SECURE OPENING

The main tank is equipped with an easy-to-handle and secure watertight lid.

- + **Dual benefits:** safe to operate, wax easy and quick to fill up.



ULTRA-PRECISE AND CONSTANT INJECTION

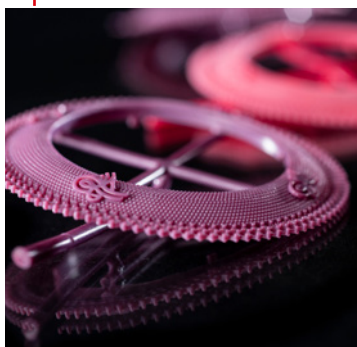
Multiple settings allow determining the right configuration for each piece.

Temperature settings independent from the wax dropping point ensure repeatable injections regardless of the type and batch of wax used.

- + **Device suitable for all types of pieces:** constant injection quality from one device to another and from one wax batch to another throughout the year.

OUTPUT AND OPTIMISATION

The device is designed for optimum output, even without a conveyor machine: 5 pieces/min.

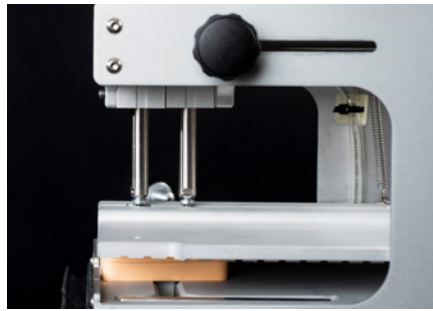




CENTRAL CYLINDER

For non-planar moulds, a single cylinder technology allows the press to perfectly hold all types of moulds, even imperfect ones.

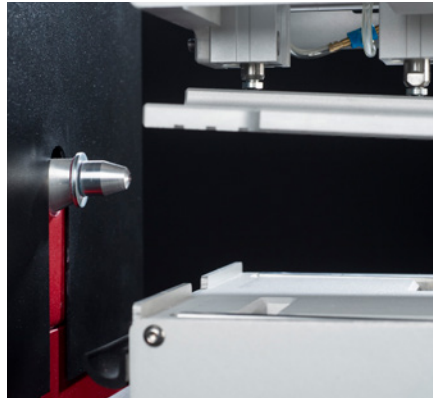
- + **Does not deform pieces.**



CYLINDERS AND POSITIONING

Precise adjustment of the clamping force regardless of mould size.

- + **Avoids parting lines, support all mould sizes.**



INJECTION PLATEN AND PRECISE ADJUSTMENT

Mould size or off-centre injection cone: machine self-adjusts even if the mould is not precisely facing the nozzle.

- + **Precise mould readjustment if the injection hole is off-centre, wide choice of mould sizes.**

PRESS: MODULAR AND ADAPTABLE

Press separated from the injector body to allow front or side injection of the moulds.

- + **Device can be configured and adapted to the user's requirements:** adapted to the user's wishes and not the other way round. A standard injector can be bought and then completed with the convenient press.
- + **Price and configuration tailored to the user's actual needs.**

EASY TO REMOVE FOR AN INJECTION OF ANY SIZE

The press can easily be removed to provide more space for injection of larger moulds. The injector's modular design allows all mould sizes to be covered by simply changing the injection press.

- + **Optimises injection of all types and sizes of moulds.** The standard press covers nearly all market requirements (from L 47 x l 30 x h 16 mm to L183 x l 185 x h 65 mm).



INTERCHANGEABLE INJECTION NOZZLES : HIGH QUALITY AND ADAPTABILITY

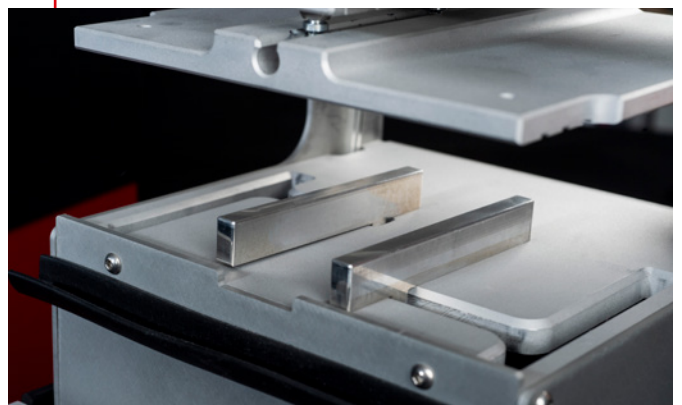
Equipped with an interchangeable injection nozzle adaptable to all kinds of moulds, for a perfect sealing between the injector and the mould cavity.

- + **High quality injection regardless of mould manufacturing technique.** Machine adaptable to all moulds, including those designed for other injectors.

LATERAL CLAMPING: QUALITY AND PRECISION

The mould to be injected is held on each side to be perfectly positioned, without deformation, in front of the injection nozzle.

- + **Lower scrap rate.** Injection quality and precision, extensive choice of mould sizes.



Characteristics

WAXMAX 5000 injector

Environment	
Operating temperature	15°C -> 40°C
Humidity	40 % -> 80 % non-condensing
Altitude	0 m -> 1,000 m
Dimensions	
With standard press	L 560 x l 310 x h 560 mm
Without press	L 310 x l 310 x h 560 mm
Weight	
Injector only	28 kg
With standard press	38.5 kg
With lateral clamp press	40 kg
Mould size	
Standard press	Min L 47 x l 30 x h 16 mm
	Max L 183 x l 185 x h 65 mm
Lateral clamp press	Min L 47 x l 130 x h 16 mm
	Max L 183 x l 148 x h 65 mm
Tank	
Capacity	9 litres
With wax	6 litres
Power supply	
Voltage	220 V - 240 V - 50/60 Hz with earth
Maximum current	Without vacuum pump 3.15 Amp @230V
	With vacuum pump 4.15 Amp @230V
Power	Without vacuum pump 736W
	With vacuum pump 960W
Interface	
Screen	LCD 10.1" Multitouch Capacitive
Software	Android 9.0
Connectivity	Wi-Fi, Bluetooth USB host, Ethernet
RFID	Titan 125 KHz
Software specification	
Internal Memory	100 memory slots
Shortcuts	5 slots
Languages	French - English
Instructions	
Temperature	Tank 60°C -> 90°C
	Injector 60°C -> 90°C
Pressure	Injector up to 2.4 bar
	Press up to 4.4 bar
	Advance up to 2.5 bar
	Lateral clamping up to 4.5 bar (manual setting)
Time	Vacuum up to 60 sec
	Injection up to 60 sec
	Cooling up to 60 sec
Connection	
Pneumatic	Flexible connection Ø 4 x 6 mm
Electrical	EU plug type E (other models on request)

Check out our complete range

Equipment | Accessories | Consumables



maxmatic
by METACONCEPT

17, Route des Sables
69630 CHAPONOST | France

FRANCE
Tél. +33 (0)478 513 838

EXPORT
Tél. +33 (0)478 518 597

info@maxmaticbymetaconcept.com
www.maxmatic.fr